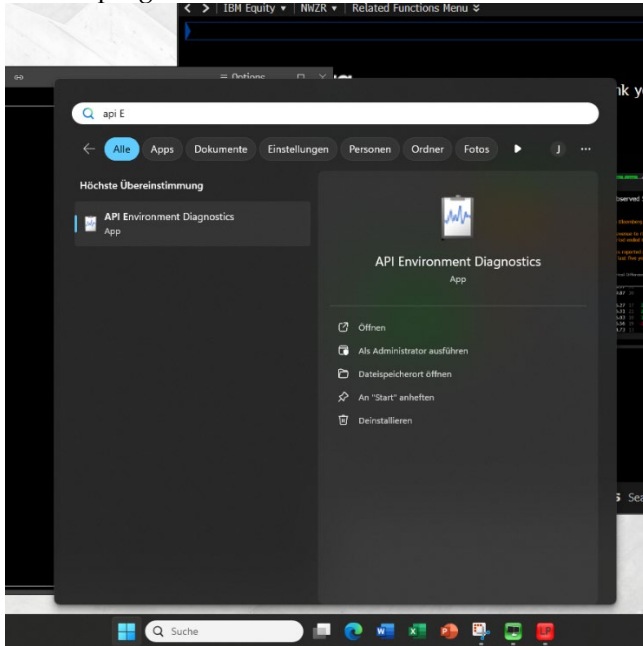


Add Bloomberg Excel Add-In

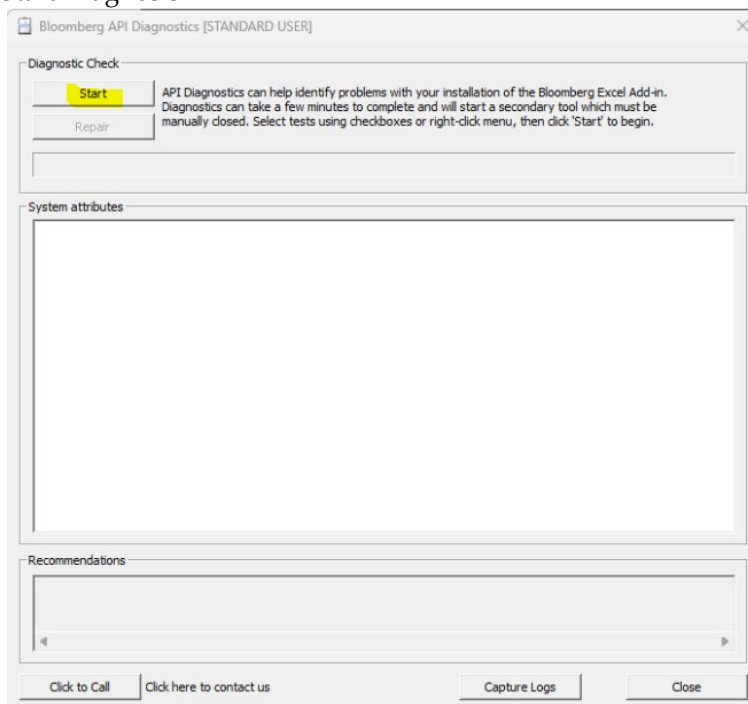
There are two ways to add a missing Bloomberg Excel add-in. For both methods, start the Bloomberg client and log in first.

Method 1:

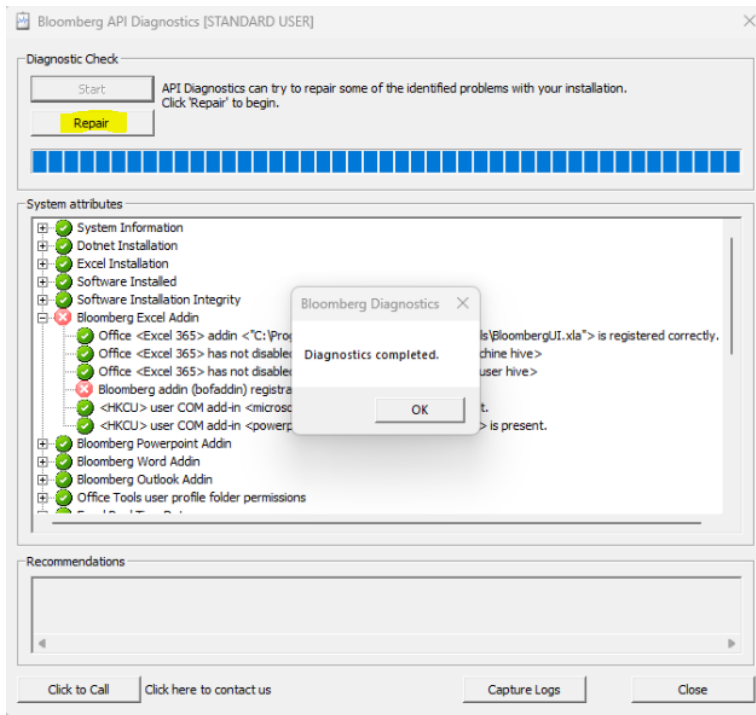
1. After successful login, search for 'API Environment Diagnostics' in the Windows Search and run the programme with this name.



2. Start Diagnosis



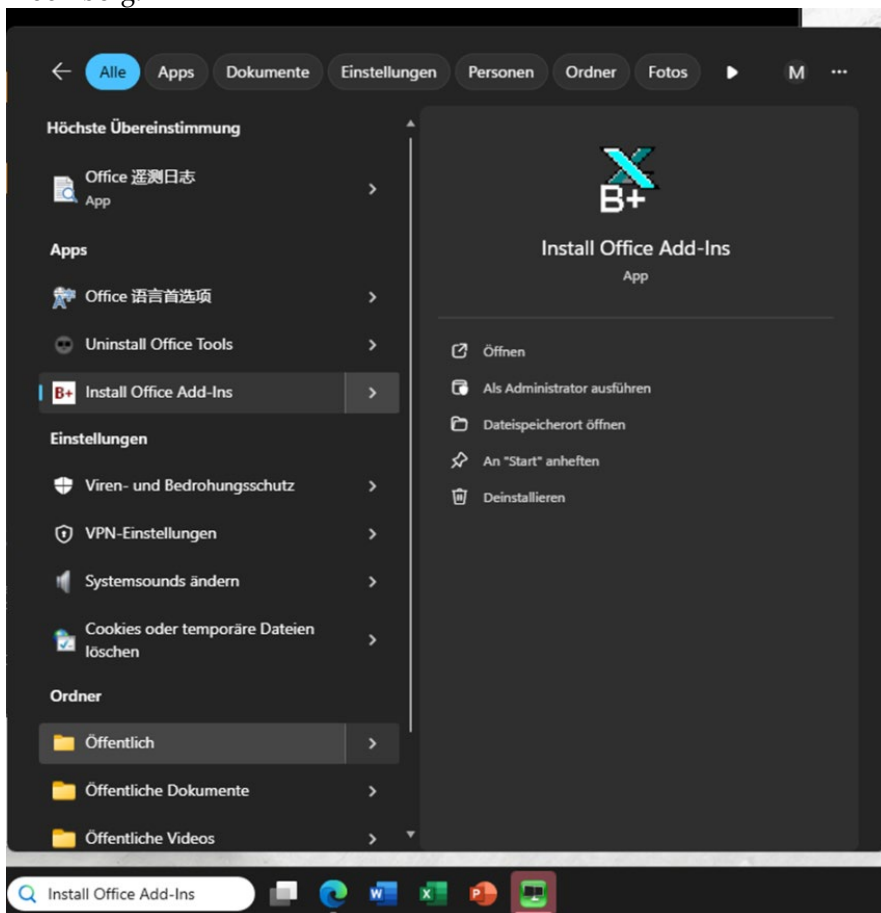
3. Once the diagnosis has been completed, click on "Repair" to rectify the errors found.



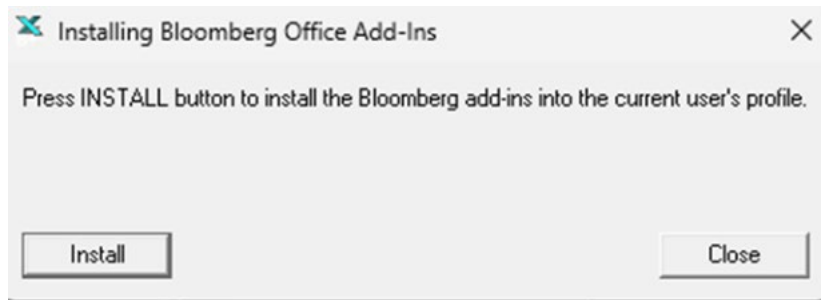
4. The Excel add-in should now work as expected. A restart may be necessary.

Method 2:

1. Search for "Office" in the Windows Search and open the "Install Office Add-Ins" app from Bloomberg:



2. Click on "Install":



If the add-in still does not work, please contact bloomberg-support@unisg.ch